

# SHIVPARVATI

Corporate office  
Laxman 29.D, E-4,  
Paranjpe 'A' Scheme,  
Road no:2 Vile parle (E),  
Mumbai-400057  
Contact: 02226101691/26102999

Site Address :  
Plot no. B, RSC-54,  
Near Vasant complex,  
Mahavir Nagar,  
Kandivali (W),  
Mumbai-400067

**JAYESH JAGRUTI DEVELOPERS PVT LTD**  
transforming spaces

We have, in preparing this information, used our best endeavours to ensure that the information contained therein is true and accurate, but accept no responsibility and disclaim all liability in respect of any errors, inaccuracies or misstatements contained herein.

# SHIV PARVATI

Heavenly adobe which encompasses all the essentials of a dream home for the eyes to admire and the heart to desire. The apartments are crafted and designed exquisitely and lavishly to raise you to a world of leisure and beauty. Shiv Parvati marks the advent of exceptional and world class planned residences in the heart of Kandivali. Be a part of royal living in the modish and trendy venture under the signage of SHIV - PARVATI.



Directing guests to "SHIVPARVATI" homes will never be a hassle as it has umpteen number of land marks close by.

## Major Transportation

- Accessible from Kandivali & Borivali Stations.
- Proximity to Link Road.
- Upcoming Metro Station.
- Wide network of public transport connecting all parts of Mumbai.

## Necessities

- PJ Pancholi high school
- Pheonix hospital
- Musical theme park

## Entertainment Zone

- Xth Central mall
- Dominos
- Shubham garden party hall

## Temples

- Amba mata madir
- Sai mandir
- Shiv mandir

# About

## JAYESH JAGRUTI DEVELOPERS

JAYESH CONSTRUCTION GROUP established three decades ago with a view to deliver quality homes is headed by MR. JAGANNATH MORE.

Developing property that inspires trust and confidence, the company has since been completed wide array of projects in the suburbs of Mumbai City. Our motto is an efficient project management.

We dedicated to create boutique living spaces that offer an ultra-premium lifestyles to our distinguish customers. Each of the projects is thoughtfully designed to ensure optimum and efficient use of space.

The company believes in team work and the team work is key to success. With the rich and vivid experience, we have made the pounding impression in the spheres of real estate.

The company is endowed with adequate infrastructure and apparatuses both at administrative and operational levels. MR. JAGANNATH MORE being the Managing Director & CEO of the company believes in dynamism, perfection and workmanship.

SHRI JAGANNATH MORE

Copyright © 2016 by Jayesh Jagruti Developers Pvt Ltd

All rights reserved. No part of this publication may be reproduced, distributed, or transmitted in any form or by any means, including photocopying, recording, or other electronic or mechanical methods, without the prior written permission of the publisher, except in the case of brief quotations embodied in critical reviews and certain other noncommercial uses permitted by copyright law. For permission requests, write to the publisher



## SHIV PARVATI

In the year 2014 Jayesh Construction group undertook a dream project in the name of "SHIV PARVATI CHS LTD" in its private ltd co. "JAYESHJAGRUTI DEVELOPERS PVT LTD".

The total construction area of the project is 1,50,000 sq.ft. , the project will have 300+ Apartments of 2 & 3 BHK, with amenities such as club house, state of the art gymnasium , party hall and luxurious swimming pool, Jacuzzi, etc.

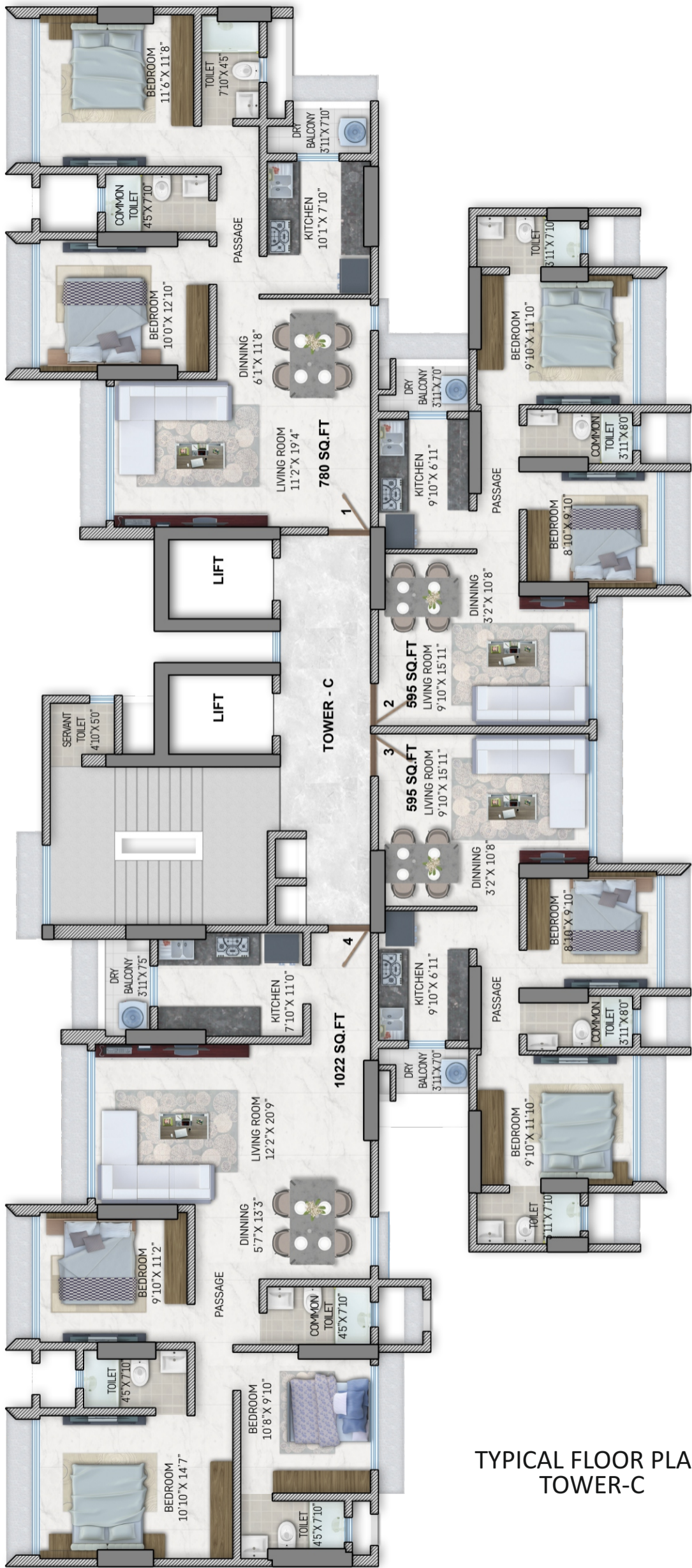
The project will also have 16 storied parking tower, level parking and puzzle parking. The project has open area on all sides facing 12 acre sports complex and municipal garden.



## Project Detail

Floors : 21 Nos.  
Tower : A,B,C,D  
Flats : 312 Nos.  
Area of Plot : 5507 sq.mt.  
Location : Plot no. B, RSC-54 Near Vasant complex Mahavir Nagar, Kandivali (W),  
Mumbai-400067  
Status : Under Construction

Maharera Registration number : REA51800024135



TYPICAL FLOOR PLAN  
TOWER-C





TOWER-C

FLAT NO.	TYPE	Carpet Area
1	2-BHK	780 SQ.FT.



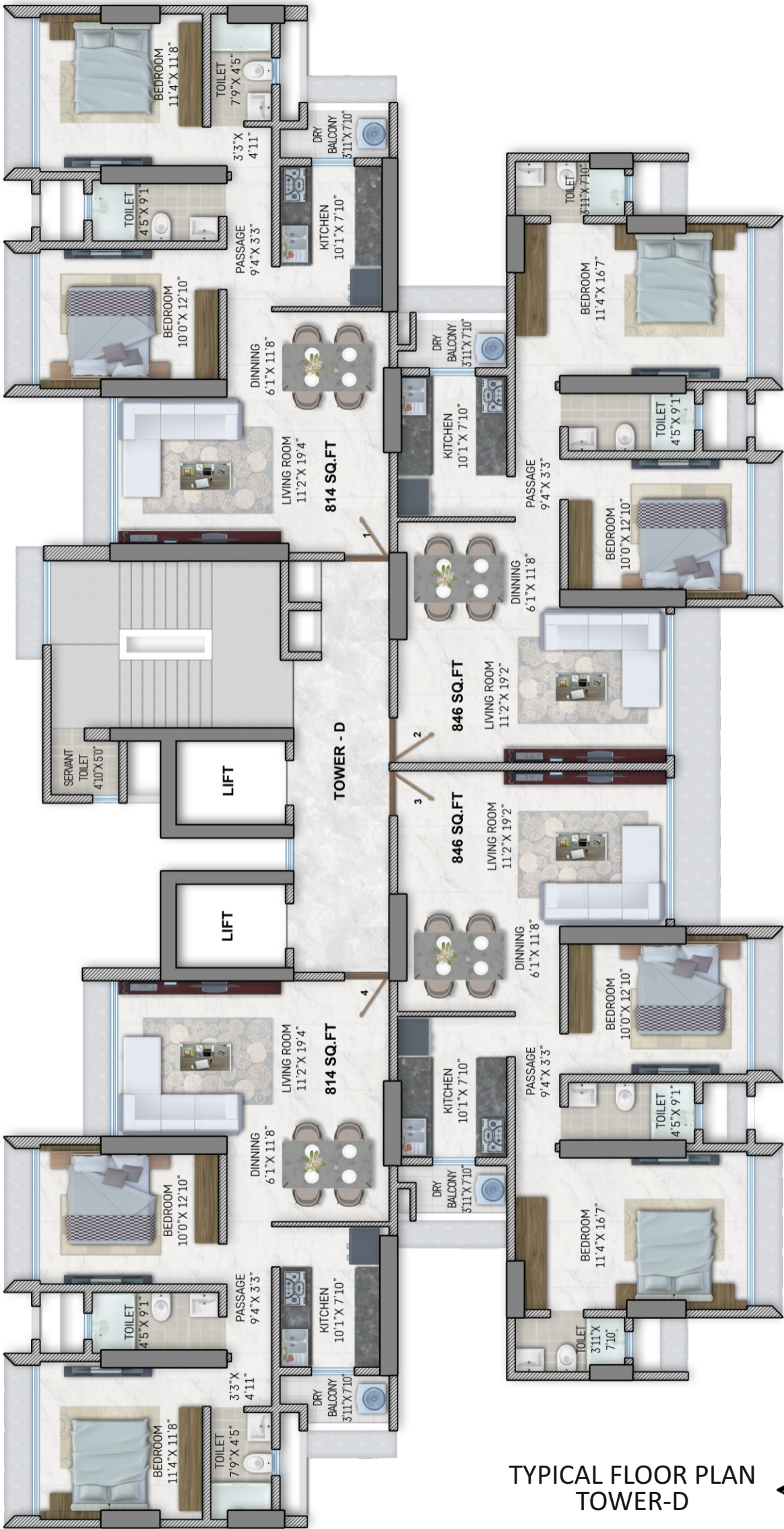
TOWER-C

FLAT NO.	TYPE	Carpet Area
2 & 3	2-BHK	595 SQ.FT.



TOWER-C

FLAT NO.	TYPE	Carpet Area
4	3-BHK	1022 SQ.FT.



TYPICAL FLOOR PLAN  
TOWER-D





TOWER-D

FLAT NO.	TYPE	Carpet Area
1 & 4	2-BHK	814 SQ.FT.



TOWER-D

FLAT NO.	TYPE	Carpet Area
2 & 3	2-BHK	846 SQ.FT.

# SAMPLE FLAT PHOTOS



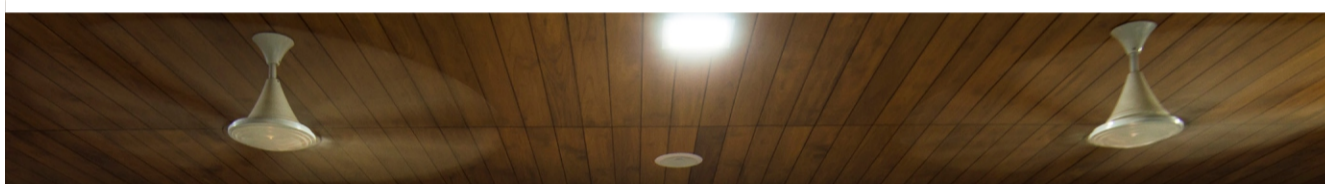
## SAMPLE FLAT PHOTOS



## PIONEERING FEATURES

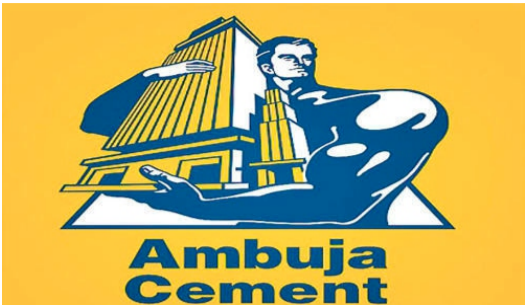
- Tower parking is a novel feature of the project.
- Gymnasium
- Swimming Pool
- Banquet Hall
- 24 X 7 Security Surveillance
- Visitors car park including doctors parking
- Intercom
- Modern firefighting and alarm system as per government regulations







# BRANDS OF MATERIAL USED



## **JAYESH JAGRUTI DEVELOPERS PVT LTD**

Address: Laxman,29-D, E-4, Paranjape 'A' Scheme, Road no. 2, Vile parle (East), Mumbai-400057.  
Tel. No. 0222 610 1691 / 26102999; Email: jayeshjagruti11@gmail.com